

**CSHD6-40C**  
**SURFACE MOUNT**  
**DUAL, COMMON CATHODE**  
**SILICON SCHOTTKY RECTIFIERS**  
**6 AMP, 40 VOLTS**



[www.centrasemi.com](http://www.centrasemi.com)



**DESCRIPTION:**

The CENTRAL SEMICONDUCTOR CSHD6-40C, silicon schottky rectifier is a high quality, well constructed, highly reliable component designed for use in all types of commercial, industrial, entertainment and automotive applications.

**MARKING: FULL PART NUMBER**

<b>MAXIMUM RATINGS:</b> ( $T_C=25^\circ\text{C}$ unless otherwise noted)	<b>SYMBOL</b>		<b>UNITS</b>
Peak Repetitive Reverse Voltage	$V_{RRM}$	40	V
Average Rectified Forward Current ( $T_C=120^\circ\text{C}$ )	$I_O$	6.0	A
Peak Forward Surge Current, $t_p=10\text{ms}$	$I_{FSM}$	75	A
Peak Repetitive Reverse Surge Current, $t_p=2.0\mu\text{s}$	$I_{RRM}$	1.0	A
Critical Rate of Rise of Reverse Voltage	$dv/dt$	10,000	V/ $\mu\text{s}$
Operating and Storage Junction Temperature	$T_J, T_{stg}$	-65 to +150	$^\circ\text{C}$
Thermal Resistance	$\theta_{JC}$	5.5	$^\circ\text{C/W}$

**ELECTRICAL CHARACTERISTICS PER DIODE:** ( $T_C=25^\circ\text{C}$  unless otherwise noted)

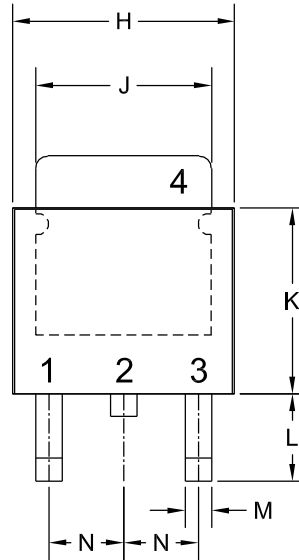
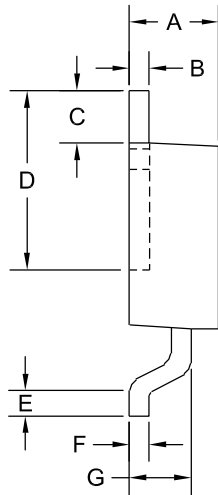
<b>SYMBOL</b>	<b>TEST CONDITIONS</b>	<b>MAX</b>	<b>UNIT</b>
$I_R$	$V_R=40\text{V}$	100	$\mu\text{A}$
$I_R$	$V_R=40\text{V}, T_C=125^\circ\text{C}$	10	mA
$V_F$	$I_F=3.0\text{A}$	0.65	V
$V_F$	$I_F=3.0\text{A}, T_C=125^\circ\text{C}$	0.60	V
$V_F$	$I_F=6.0\text{A}$	0.85	V
$V_F$	$I_F=6.0\text{A}, T_C=125^\circ\text{C}$	0.80	V

CSHD6-40C

**SURFACE MOUNT  
DUAL, COMMON CATHODE  
SILICON SCHOTTKY RECTIFIERS  
6 AMP, 40 VOLTS**



**DPAK RECTIFIER CASE - MECHANICAL OUTLINE**

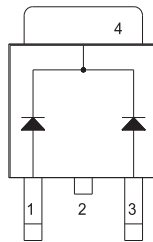


R2

**LEAD CODE:**

- 1) Anode 1
  - 2) Cathode
  - 3) Anode 2
  - 4) Cathode
- Pin 2 is Common to the Tab (4).

**MARKING: FULL PART NUMBER**



SYMBOL	DIMENSIONS			
	INCHES		MILLIMETERS	
	MIN	MAX	MIN	MAX
A	0.083	0.108	2.10	2.75
B	0.016	0.024	0.40	0.60
C	0.063		1.60	
D	0.203	0.219	5.15	5.55
E	0.039		1.00	
F	0.020		0.50	
G	0.051	0.071	1.30	1.80
H	0.248	0.268	6.30	6.80
J	0.197	0.217	5.00	5.50
K	0.209	0.224	5.30	5.70
L	0.090	0.106	2.30	2.70
M	0.012	0.031	0.30	0.80
N	0.091		2.30	

DPAK RECTIFIER (REV: R2)

R9 (17-February 2010)